

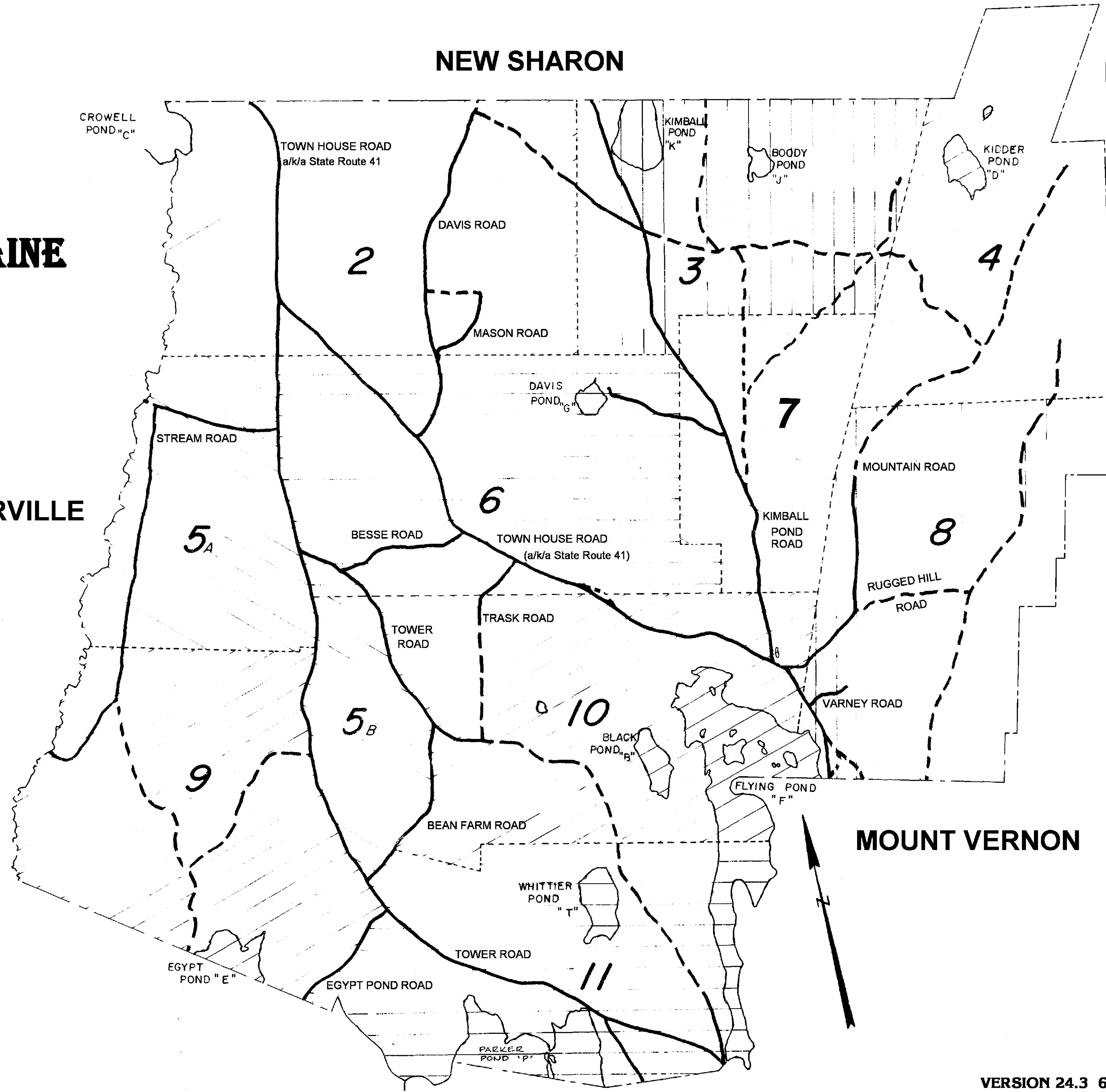
VIENNA, MAINE

CHESTERVILLE

NEW SHARON

ROME

MOUNT VERNON



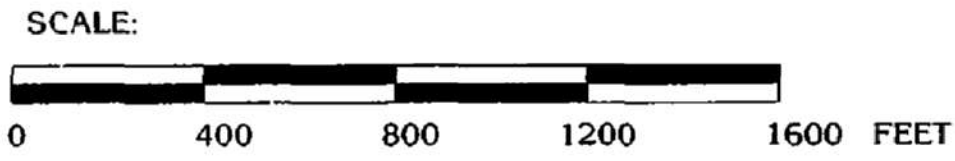
NOTE: These maps are intended for assessment purposes ONLY and are not suitable for ANY other use.

Original scale: 1" = 1540' +/-

VERSION 24.3 6/5/24

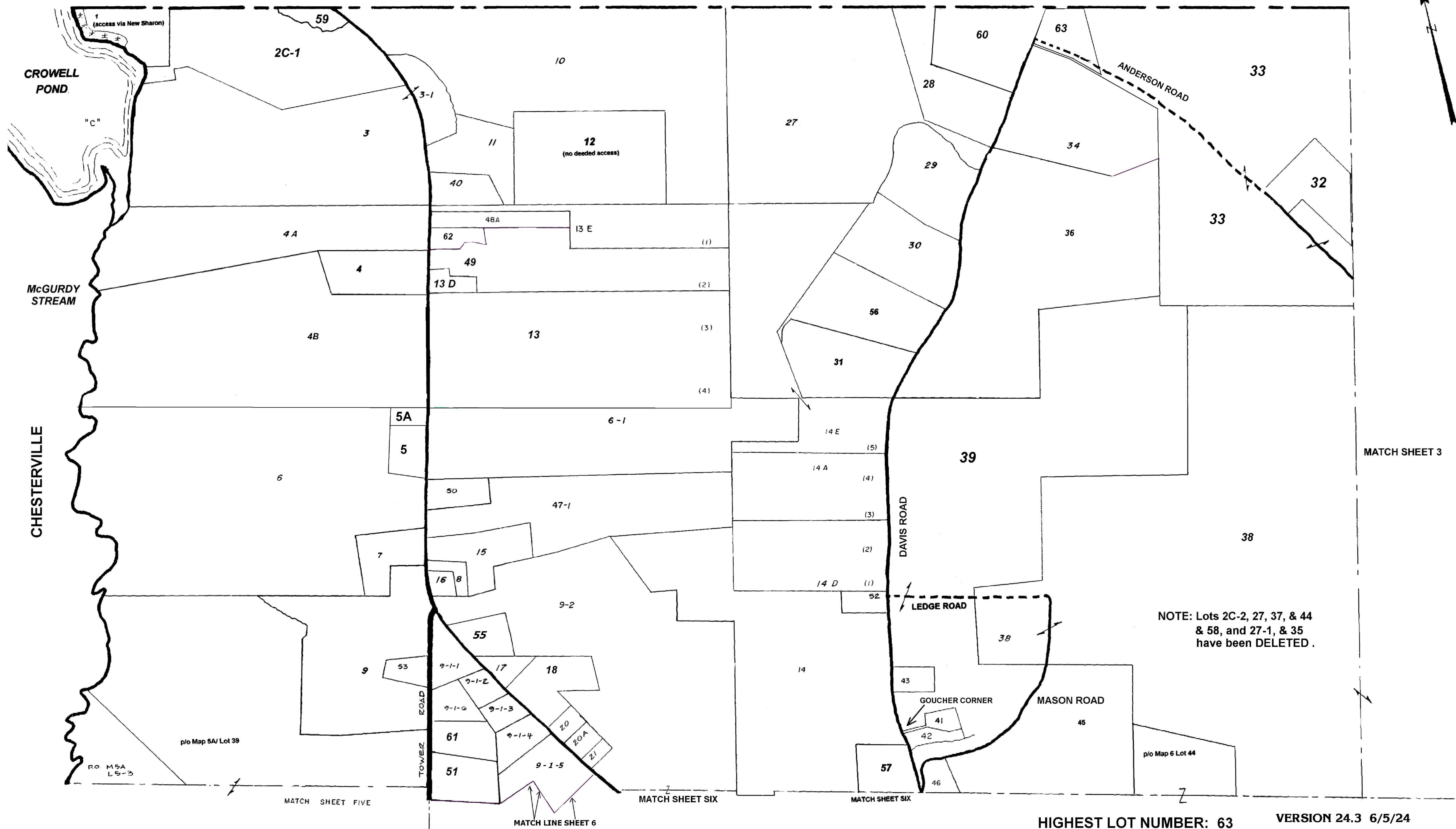
Updated to April 1, 2024 by
YORK HILL SURVEYING
Creston Gaither, PLS
150 Davis Road
Vienna, ME 04360
(207) 293-2909
email: crestong@yorkhillsurveying.com





NOTE: These maps are intended for assessment purposes ONLY and are not suitable for ANY other use.

NEW SHARON



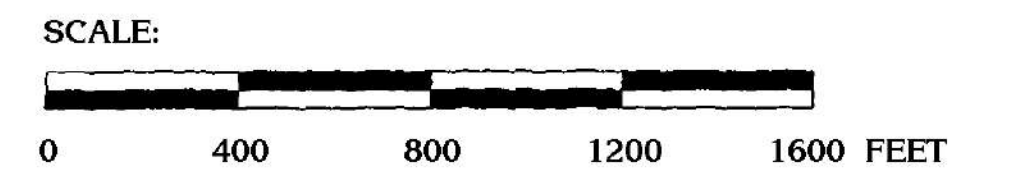
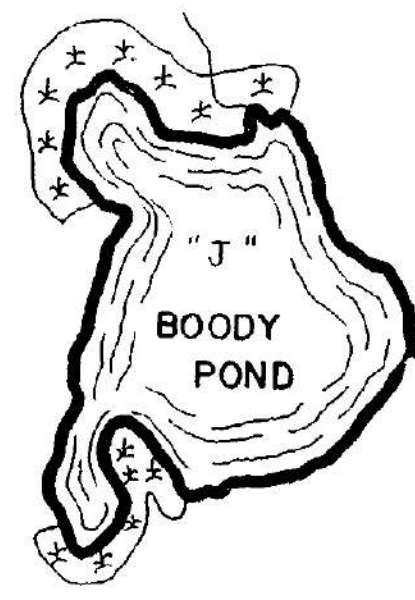
NOTE: Lots 2C-2, 27, 37, & 44 & 58, and 27-1, & 35 have been DELETED.

HIGHEST LOT NUMBER: 63 VERSION 24.3 6/5/24

NEW SHARON

PIO MAP 4 LOT 1

KENNEBEC HIGHLANDS



NOTE: Lots 39, 49, 54, 55, 60, & 70 have been DELETED

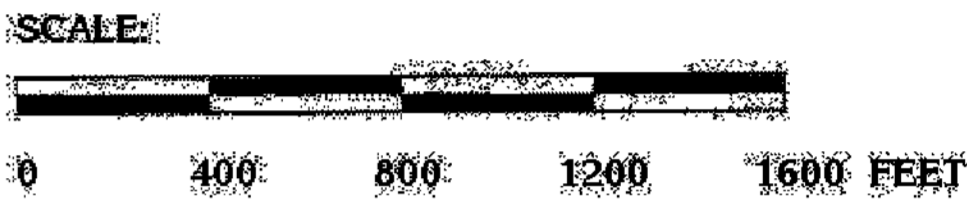
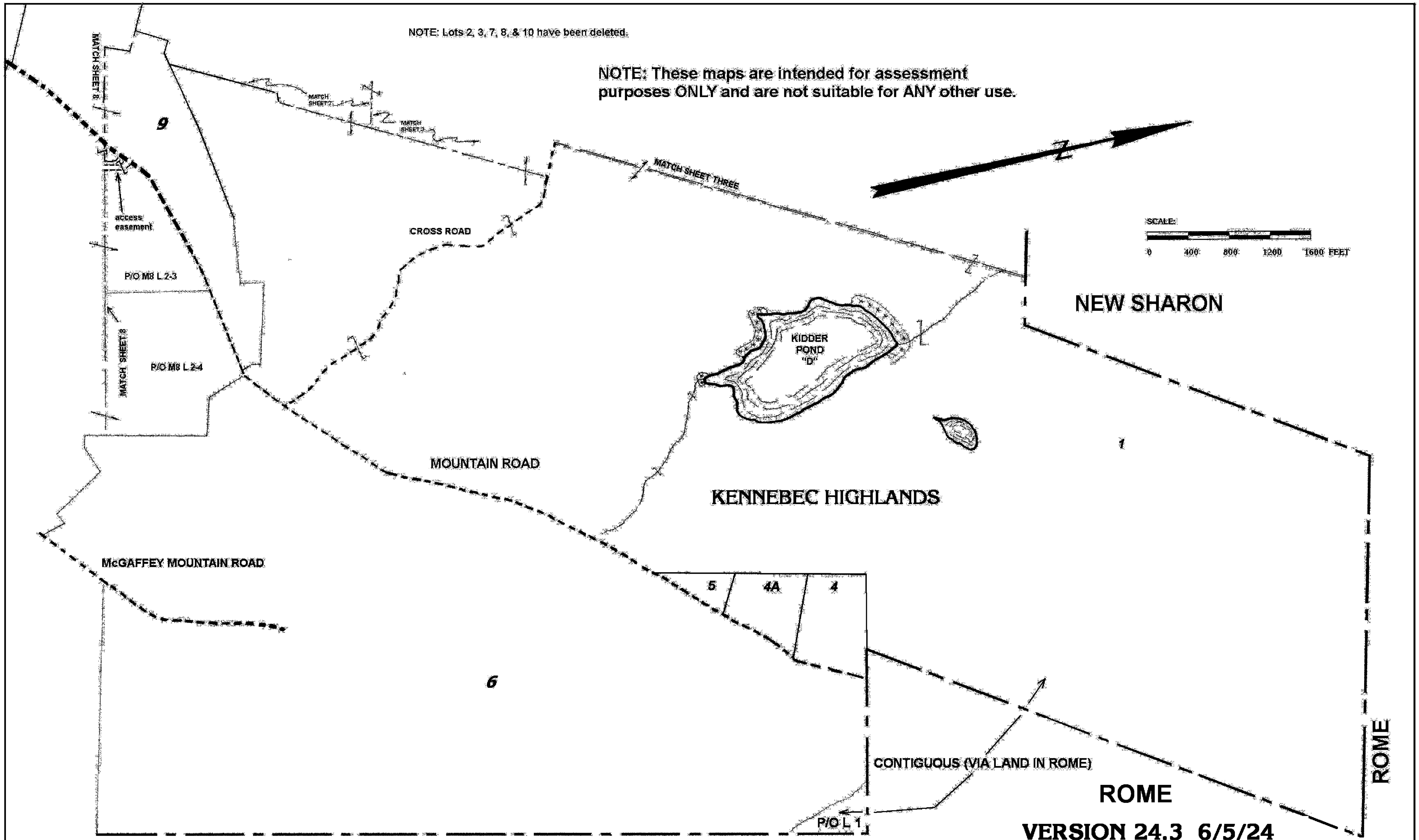
Highest lot number: 77

NOTE: These maps are intended for assessment purposes ONLY and are not suitable for ANY other use.

VERSION 24.3 6/5/24

NOTE: Lots 2, 3, 7, 8, & 10 have been deleted.

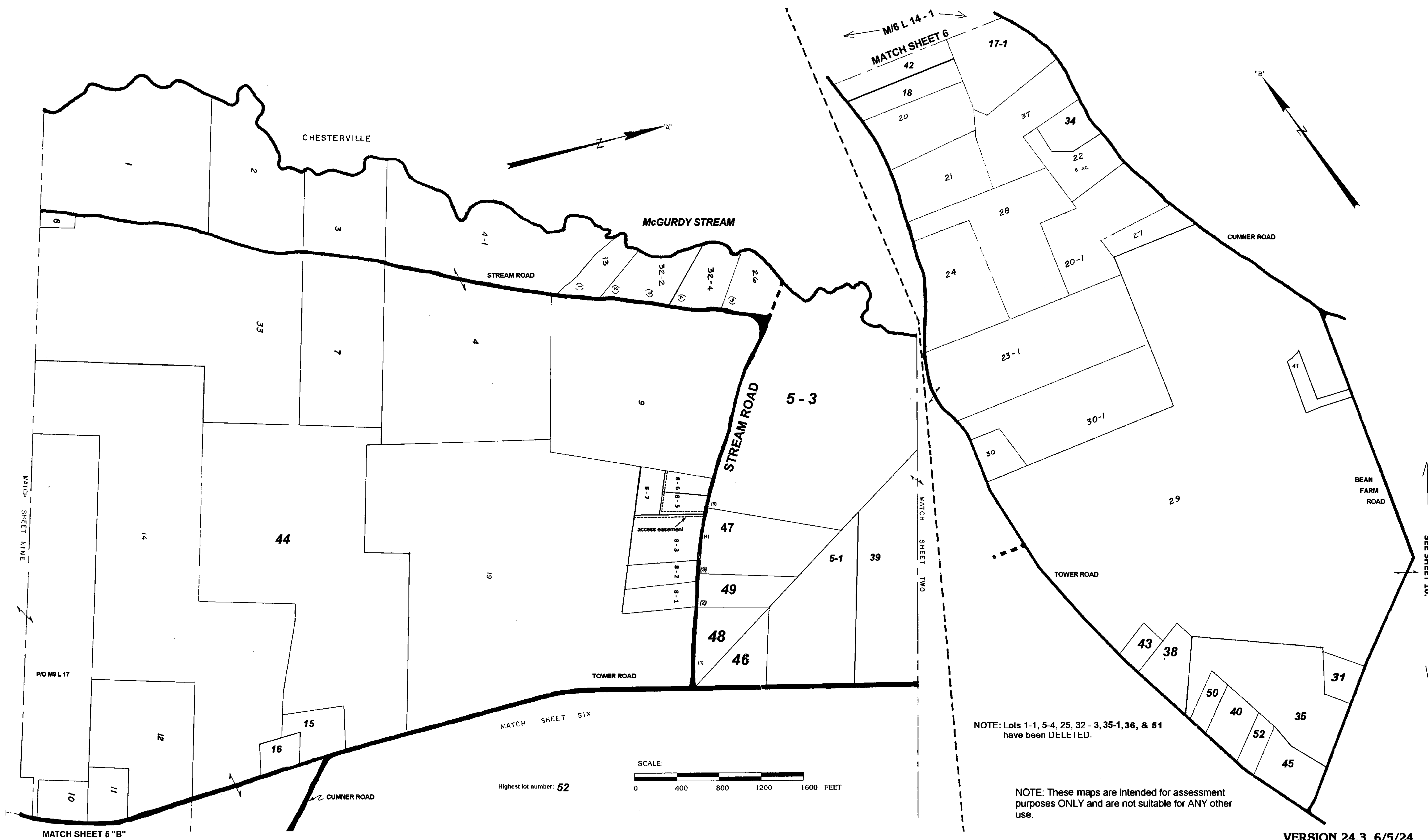
NOTE: These maps are intended for assessment purposes ONLY and are not suitable for ANY other use.



Original maps by J. Pongonis
Updates 1994 - present by York Hill Surveying, Vienna, ME

TOWN OF VIENNA TAX MAP No. 4 APRIL 1, 2024

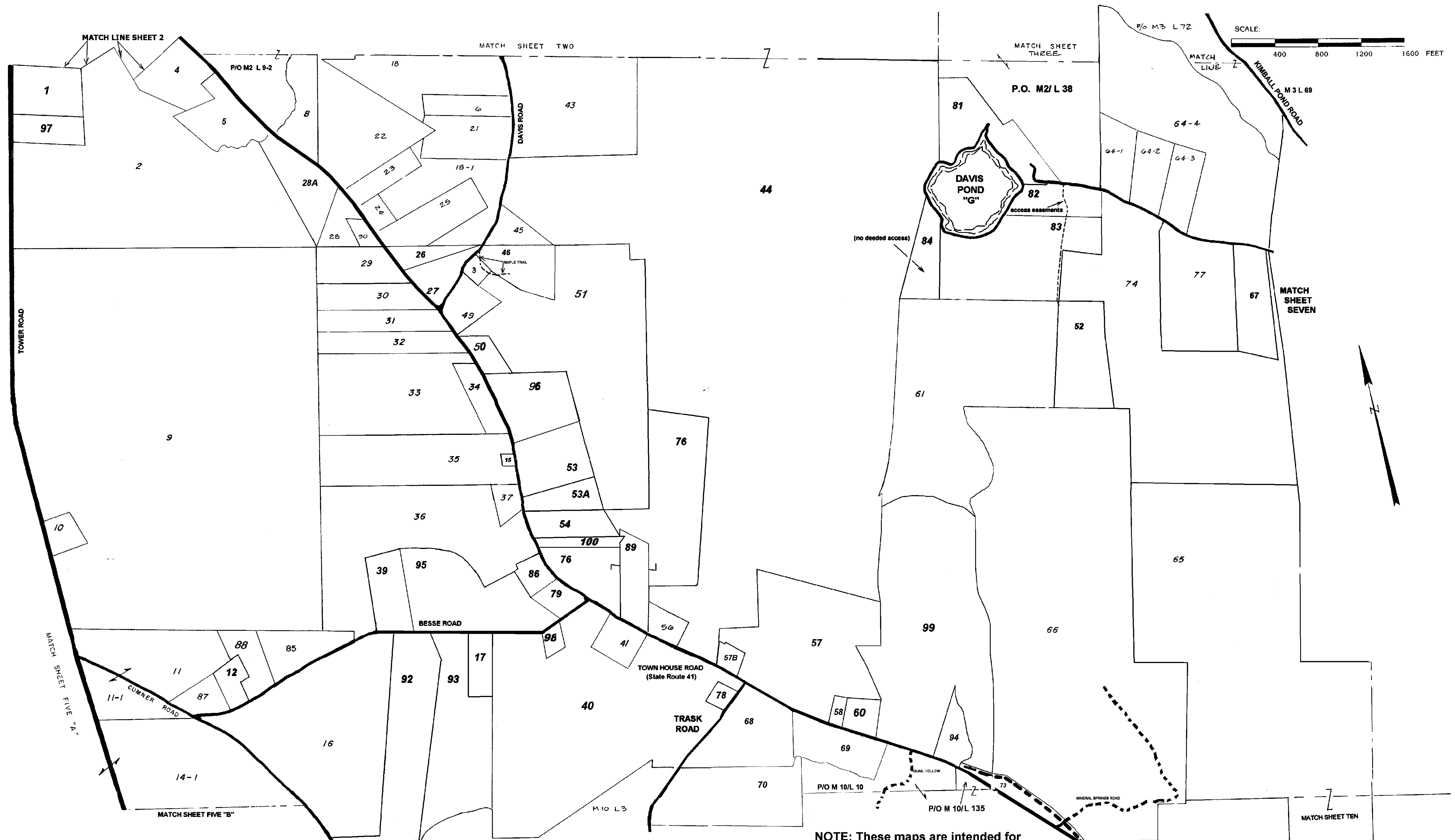
VERSION 24.3 6/5/24



NOTE: Lots 1-1, 5-4, 25, 32-3, 35-1, 36, & 51 have been DELETED.

NOTE: These maps are intended for assessment purposes ONLY and are not suitable for ANY other use.

VERSION 24.3 6/5/24



HIGHEST LOT NUMBER: 100

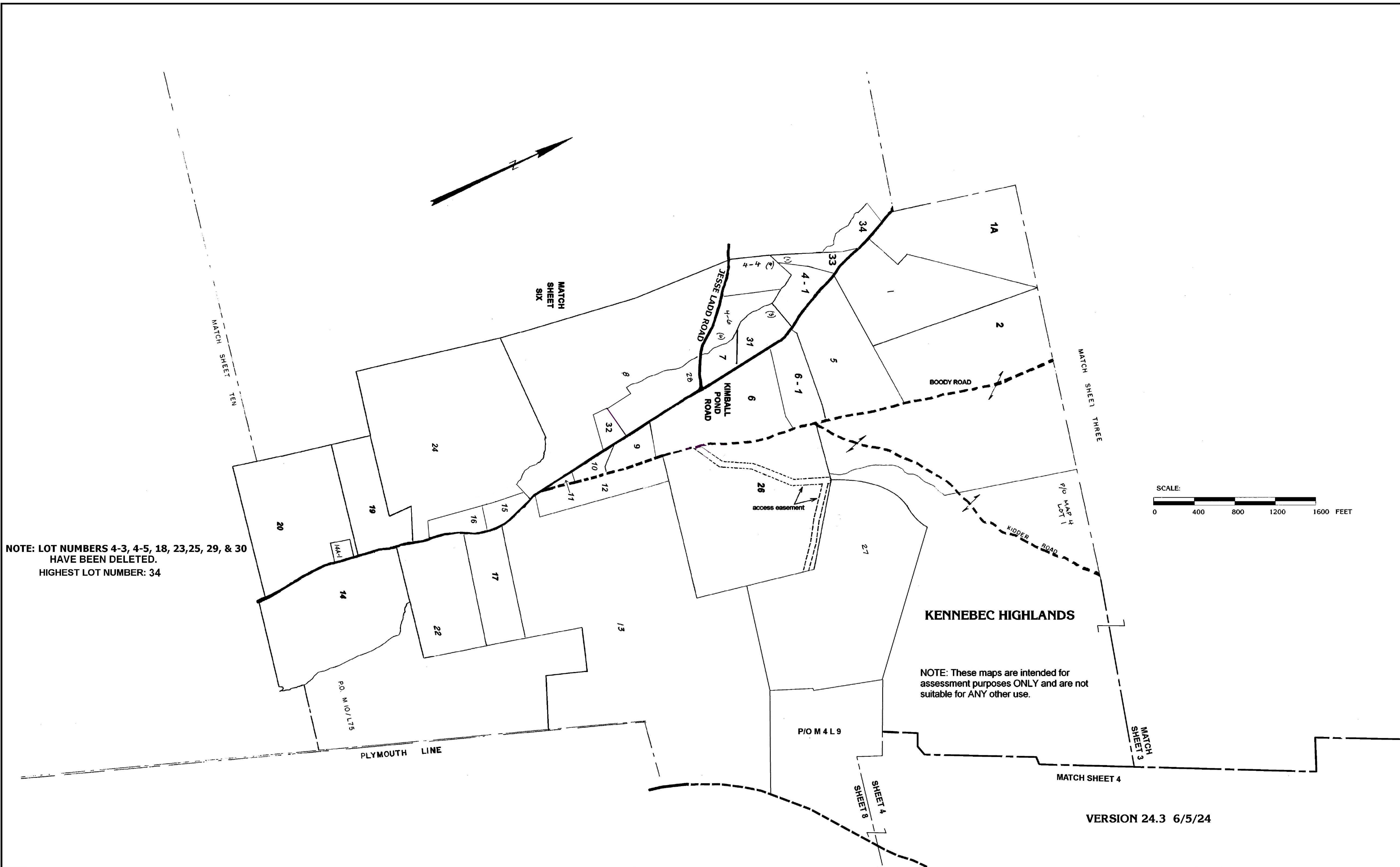
NOTE: Lots 13 and 55 have been DELETED.

NOTE: These maps are intended for assessment purposes ONLY and are not suitable for ANY other use.

VERSION 24.3 6/5/24

Original maps by J. Pongonis
 Updates 1994 - present by York Hill Surveying, Vienna, ME

TOWN OF VIENNA TAX MAP NO. 6 APRIL 1, 2024



NOTE: LOT NUMBERS 4-3, 4-5, 18, 23, 25, 29, & 30
 HAVE BEEN DELETED.
 HIGHEST LOT NUMBER: 34

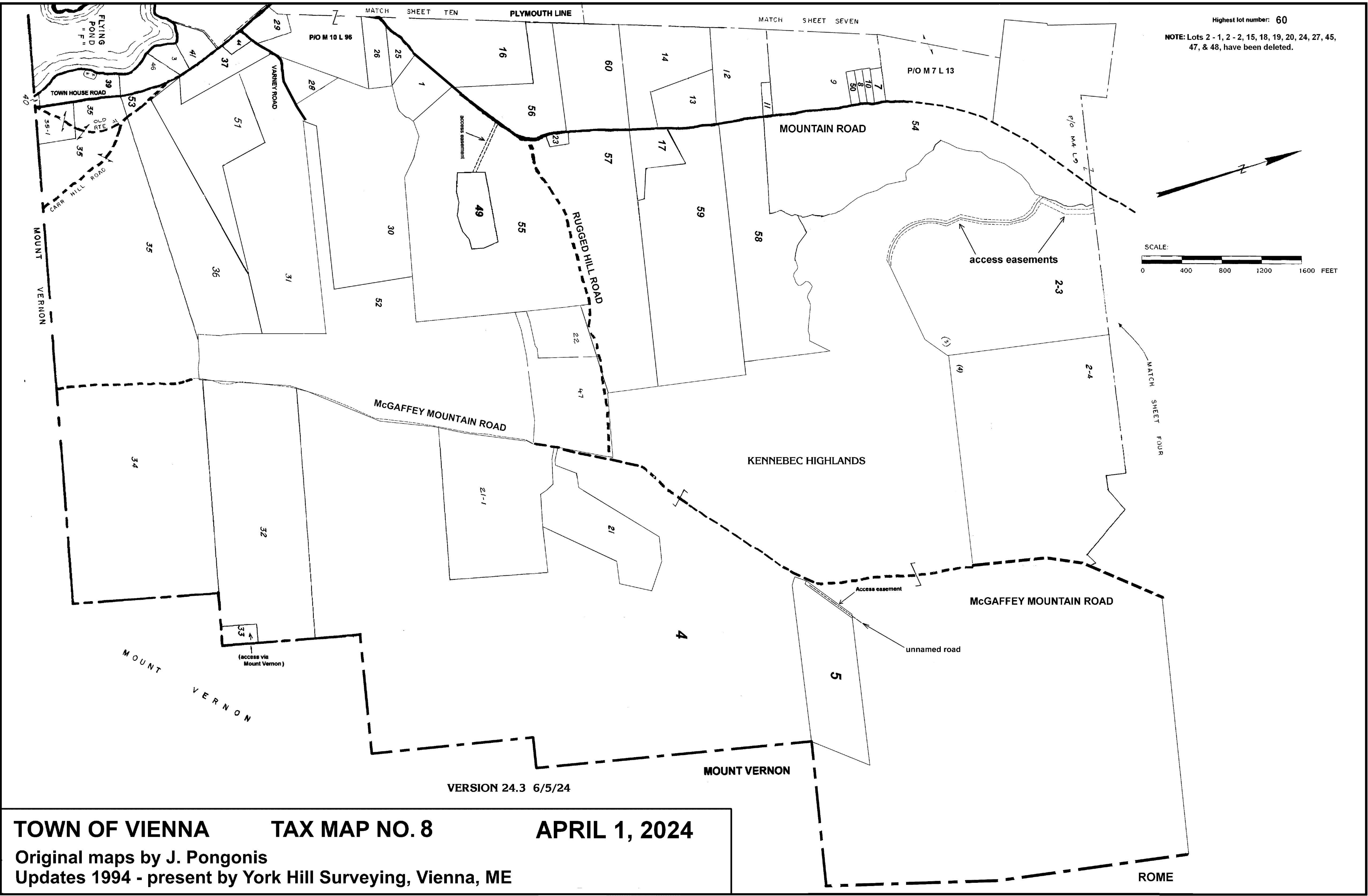
KENNEBEC HIGHLANDS

NOTE: These maps are intended for
 assessment purposes ONLY and are not
 suitable for ANY other use.

VERSION 24.3 6/5/24

Highest lot number: 60

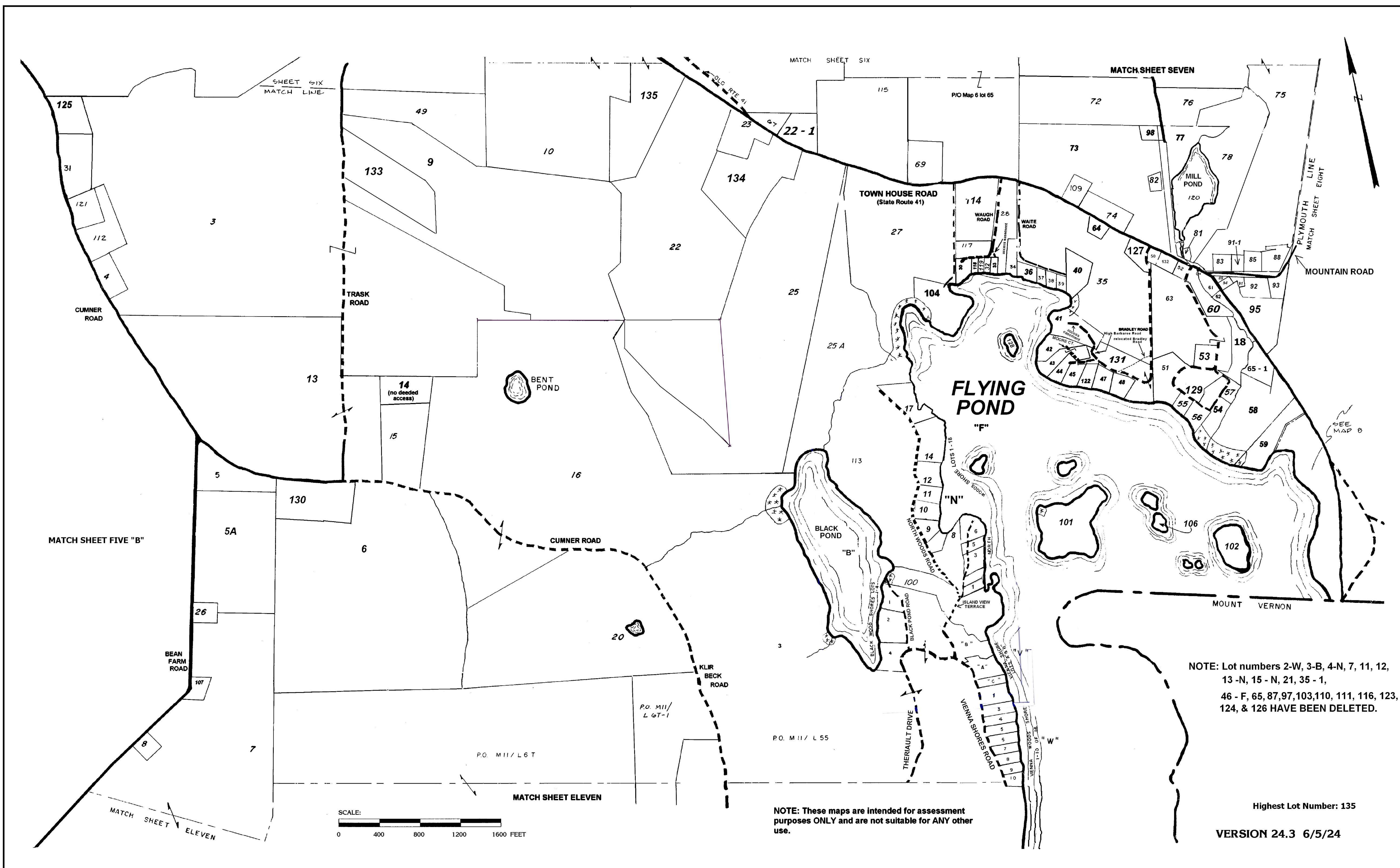
NOTE: Lots 2 - 1, 2 - 2, 15, 18, 19, 20, 24, 27, 45, 47, & 48, have been deleted.



VERSION 24.3 6/5/24

TOWN OF VIENNA TAX MAP NO. 8 APRIL 1, 2024
 Original maps by J. Pongonis
 Updates 1994 - present by York Hill Surveying, Vienna, ME

ROME

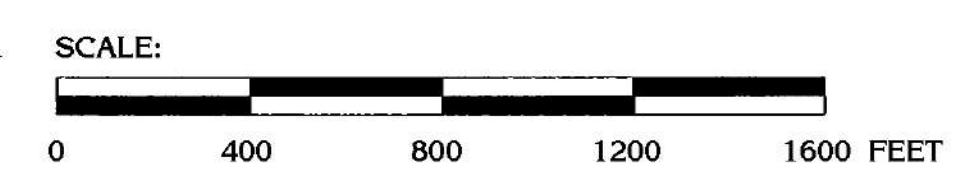


NOTE: Lot numbers 2-W, 3-B, 4-N, 7, 11, 12, 13 -N, 15 - N, 21, 35 - 1, 46 - F, 65, 87, 97, 103, 110, 111, 116, 123, 124, & 126 HAVE BEEN DELETED.

Highest Lot Number: 135

VERSION 24.3 6/5/24

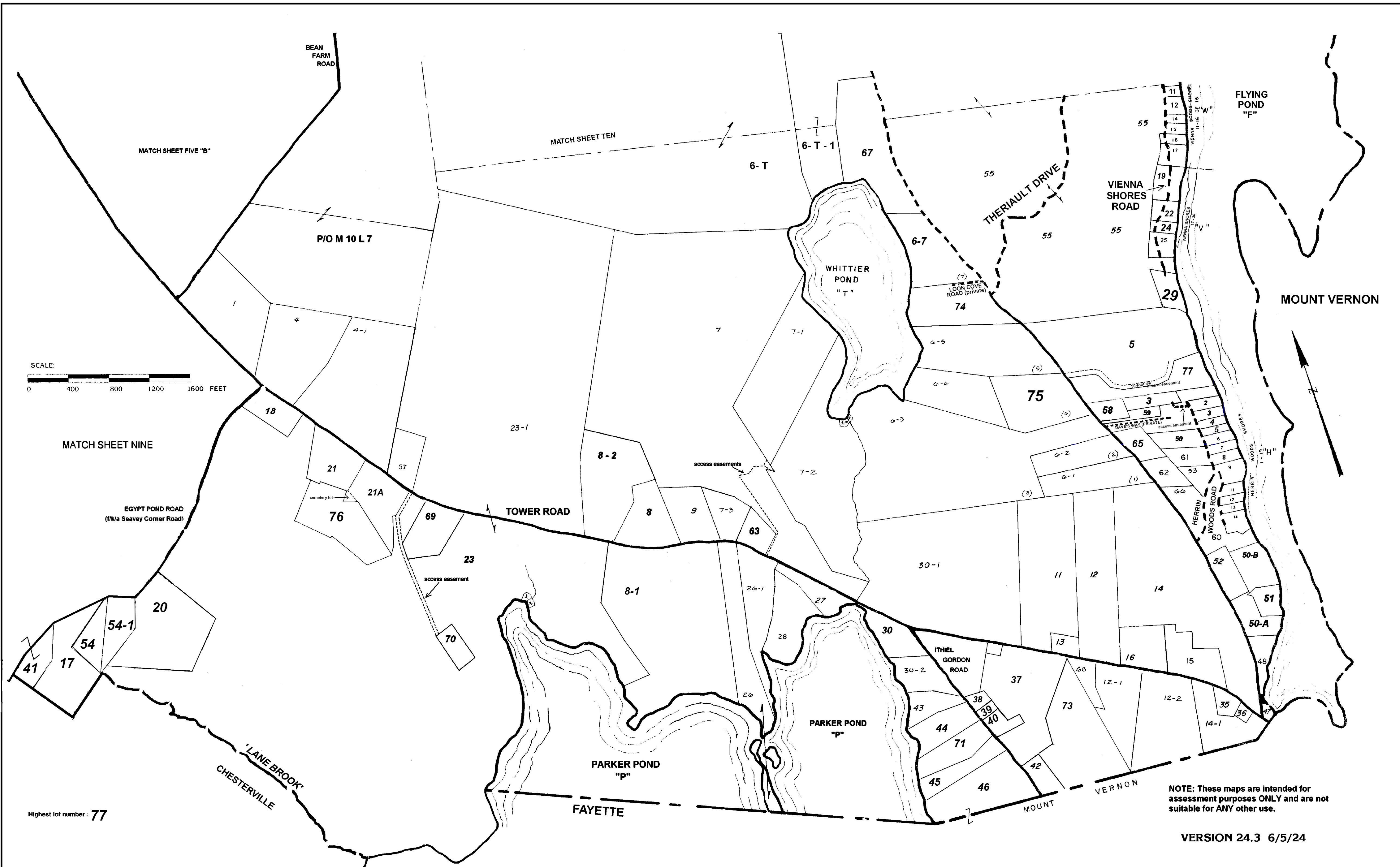
NOTE: These maps are intended for assessment purposes ONLY and are not suitable for ANY other use.



Original maps by J. Pongonis
 Updates 1994 - present by York Hill Surveying, Vienna, ME

TOWN OF VIENNA TAX MAP NO. 10

APRIL 1, 2024



SCALE:
0 400 800 1200 1600 FEET

Highest lot number : 77

NOTE: These maps are intended for assessment purposes ONLY and are not suitable for ANY other use.

VERSION 24.3 6/5/24