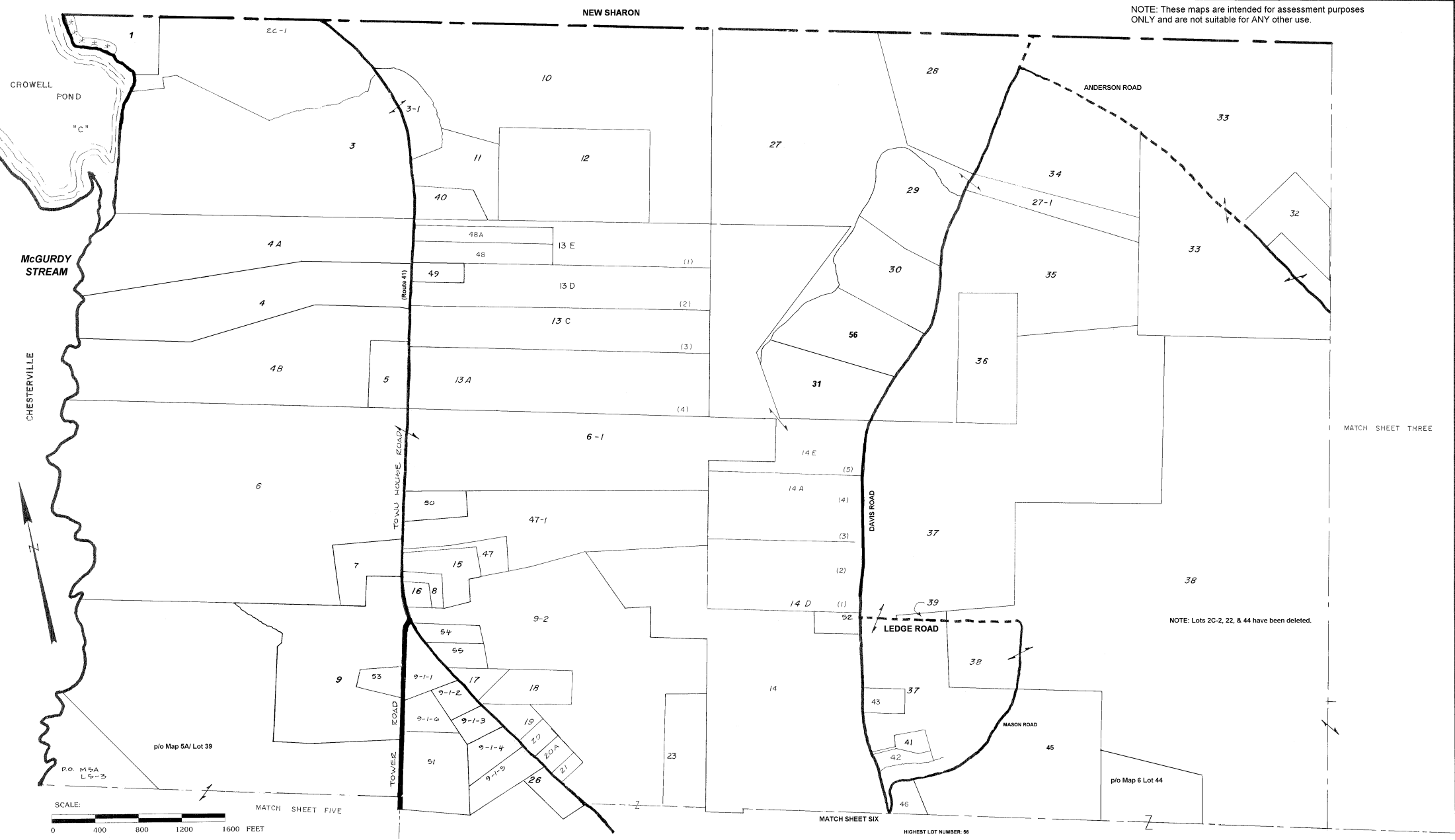
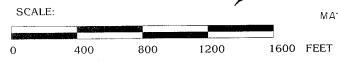


NOTE: These maps are intended for assessment purposes ONLY and are not suitable for ANY other use.



NOTE: Lots 2C-2, 22, & 44 have been deleted.



ORIGINAL SCALE: 1" = 385' +/-

BY: J. PONGONIS

TOWN OF VIENNA

TAX MAP NO. 2

APRIL 1, 2009